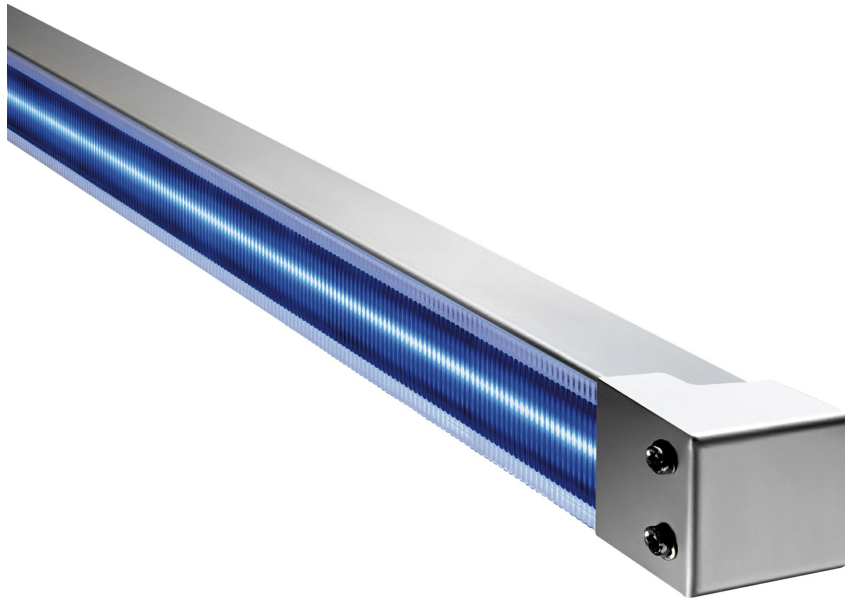


instalight 4010 LH

## Light line system indoor/outdoor 230 V



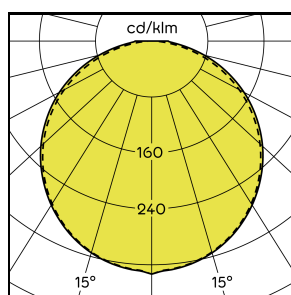
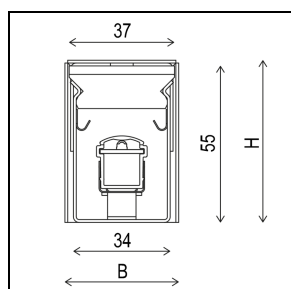
The light line system serves as an ideal tool for effective building accentuation. Reduced to a minimum of material in mechanical terms, the LED light line supports the architectural building character but, when switched off, recedes almost invisibly into the background. In addition, the light insert stands out through a direct connection to the mains voltage and compatibility with standard dimmers.

### Main Features

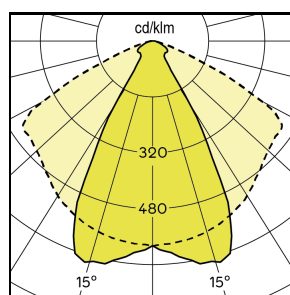
- > Modular component system guarantees maximum design flexibility and scalability in the object
- > Exchangeable acrylic covers for variable light effect
- > Minimally visible housing parts make the luminaire inconspicuous in daylight
- > Weatherproof and UV-resistant materials guarantee color stability for the entire service life
- > Revisable and upgradeable LED technology
- > Various light inserts ensure flexibility in the application
- > V2A stainless-steel housing for durable operation in an extreme environment
- > Light inserts with the color temperature 4000 K are DB-listed



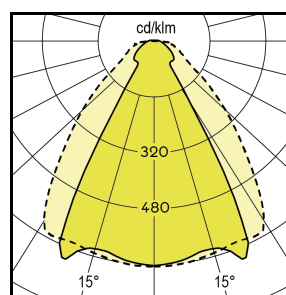
# Product Variations



120°



60°, CLEAR



60°, MICRO LINE

	Optics	Optics dir.	Max. lumin. flux
il 4010 LH CL	Clear	60°	670 lm
il 4010 LH ML	Micro Line	60°	560 lm
il 4010 LH TL	Satined	120°	425 lm

# Specifications

Lifecycle Status	Active
Rated voltage AC	230 V
Power consumption	10 W/m
Protection class	II
Light colour	2700 K / 3000 K / 4000 K

Width (B)	40 mm
Height (H)	57 mm
Dimmable/Controllable	Yes
Material	Stainless steel
Weight	2.2 kg/m
Impact strength	IK10