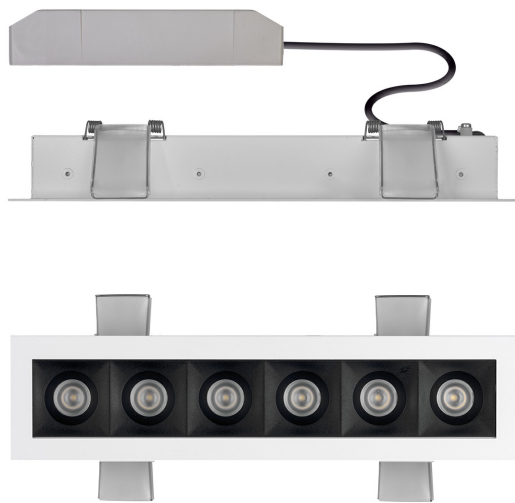


instalight NoLimit 4033 built-in ceiling luminaire High Power Optics

IL 4033 EB HO 840X WB45

Recessed luminaire including power supply unit from the NoLimit system with high light quality

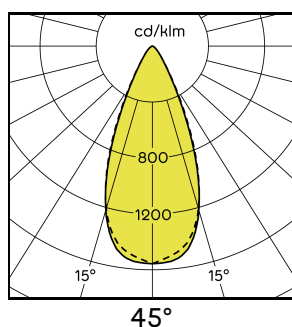
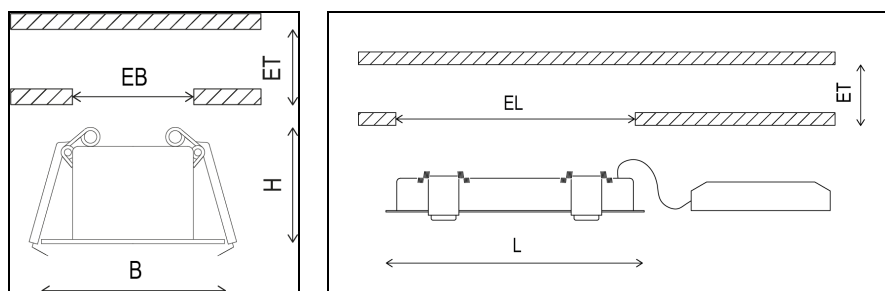


Main Features

- > Recessed luminaire for general lighting and accent lighting
- > Different beam angles: spot, medium, flood and wide oval
- > Available light colors in 2700 K, 3000 K, 4000 K and Tunable White (2700 K to 5000 K)
- > Homogeneous light mixture within one optic with Tunable White
- > Precise light imaging for all light colours
- > Compact and pre-wired recessed luminaire for ceilings with a thickness from 1 to 12.5 mm
- > Quick assembly due to tension springs
- > Housing colour and luminaire passe-partout in separate colours
- > Other optics and light colours on request



Product Variations



Specifications

Article number	on request	Luminous efficiency	90 lm/W
Lifecycle Status	Active	Colour rendition Ra	85
Rated voltage AC	220 ... 240 V	Ambient temperature	-25 ... +45 °C
Rated voltage DC	175 ... 275 V	Length (L)	272 mm
Mains frequency	50 / 60 Hz	Width (B)	67 mm
Power consumption	19 W	Height (H)	45 mm
Power factor	0.95	Installation length (EL)	260 mm
Degree of protection	IP20	Installation depth (ET)	55 mm
Protection class	II	Installation width (EB)	55 mm
Beam angle direct	45°	Dimmable/Controllable	yes
Max luminous flux direct	1700 lm	Interface	DALI
Luminous flux direct (white)	1700 lm	Nominal current	900 mA
Light colour	4000 K	Dimensions Power Supply Unit (LxWxH)	146.5 x 44 x 30 mm