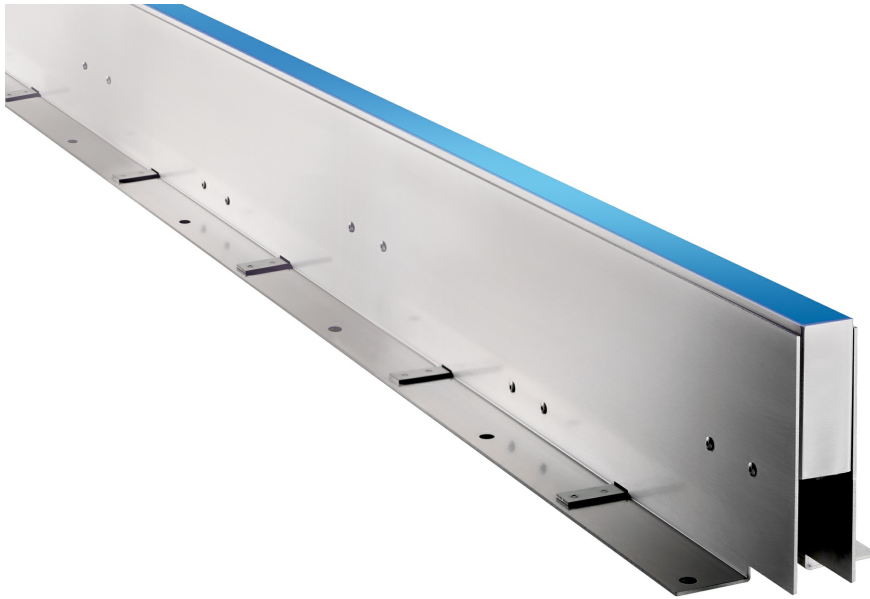


instalight 1060 LX RGBW

## Cast in-ground light line



The in-ground light line, made of V4A stainless steel, is much more than a simple orientation light. From the clear, monochrome line guide through to multimedia light installations with hundreds of colour-controllable segments, this luminaire can fulfil all kinds of requirements, anywhere in the world - on squares and paths, indoors and outdoors, above and below water.

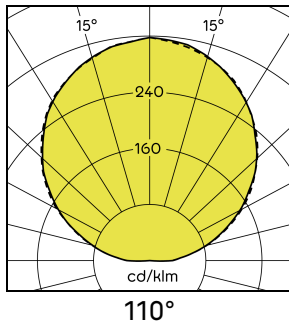
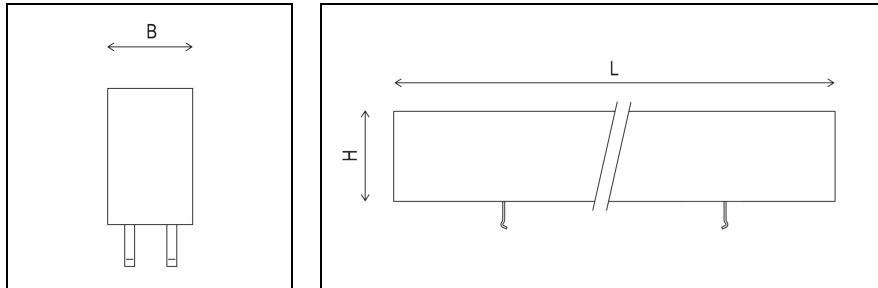
### Main Features

- > Homogeneous light-emitting surface for aesthetic lighting effect
- > Minimally visible housing parts make the luminaire inconspicuous in daylight
- > Flush installation for perfect integration into the surroundings
- > Weatherproof and UV-resistant materials guarantee color stability for the entire service life
- > Extremely stable installation frame, can withstand wheeled vehicles
- > High quality look due to construction without screws in the visible area
- > Frameless housing ensures seamless transition to light-emitting surface
- > V4A stainless-steel housing for durable operation in an external environment
- > Brilliant white light, rich colours and pastel shades from one luminaire by combining RGB and white LED
- > Maintenance-free and safe from vandalism thanks to impact-resistant full grouting
- > Snap-In-technology of the light inserts for fast assembly without tools
- > Ready to connect with system plug for quick and reliable installation
- > IP69: According to ISO 20653 (standard including cleaning with high-pressure hot vapour cleaner)
- > IP69K: According to EN DIN 40050-9 (standard including cleaning with high-pressure hot vapour cleaner)
- > Project-related special lengths on request





## Product Variations



	P	Max. lumin. flux	Length (L)	Weight
il 1060 LX 344 RGBW	5.6 W	45 lm	344 mm	1.4 kg
il 1060 LX 500 RGBW	8.4 W	68 lm	500 mm	2 kg
il 1060 LX 1000 RGBW	16.8 W	135 lm	1000 mm	4 kg

## Specifications

<b>Lifecycle Status</b>	Active	<b>Height (H)</b>	70 mm
<b>Rated voltage DC</b>	28 V SELV	<b>Connection mode</b>	ITT Cannon IP67
<b>Protection luminaire</b>	IP68, 2 m / IP69 / IP69K	<b>Cable length</b>	2 x 500 mm
<b>Protection connector</b>	IP67	<b>Dimmable/Controllable</b>	Yes
<b>Protection class</b>	III	<b>Interface</b>	LEDTRIX
<b>Optics</b>	Satined	<b>Housing colour</b>	stainless steel
<b>Beam angle direct</b>	110°	<b>Housing material</b>	Stainless steel (V4A)
<b>Light colour</b>	RGBW	<b>Cover material</b>	Plastic
<b>Ambient temperature</b>	-20 ... +45 °C	<b>Glow-wire testing</b>	650 °C
<b>Storage/transport temperature</b>	-25 ... +60 °C	<b>Weight</b>	4 kg/m
<b>Service life (L80/B10)</b>	60,000 h	<b>Impact strength</b>	IK10
<b>Width (B)</b>	29 mm	<b>Stat. pressure load</b>	30 kN
		<b>Ability to be traversed by vehicles</b>	yes

# Accessories



**Mounting frame 1000 x 165**  
*IL 1060 F 1000 X 165*



**Mounting frame 1000 x 125**  
*IL 1060 F 1000 X 125*



**Mounting frame 1000 x 90**  
*IL 1060 F 1000 X 90*



**Mounting frame 500 x 165**  
*IL 1060 F 500 X 165*



**Mounting frame 500 x 125**  
*IL 1060 F 500 X 125*



**Mounting frame 500 x 90**  
*IL 1060 F 500 X 90*



**Mounting frame 344 x 165**  
*IL 1060 F 344 X 165*



**Mounting frame 344 x 125**  
*IL 1060 F 344 X 125*



**Mounting frame 344 x 90**  
*IL 1060 F 344 X 90*



**Lifting tool il1060**  
*IL 1060 ZM 01*



**Safety sleeve IP67**  
*50900049*



**Adapter cable**  
*58924050*



**End plug**  
*58926010*



**End socket**  
*58926011*



**Adapter**  
*IL ZL IP20 001*



**Supply unit 0-120 W / AM**  
*58920027*



**SNT ELI 0-120 W**  
*58916023*



**SNT ELI 0-110 W / 30 V**  
*50930074*



**SNT ELI 0-57 W**  
*58916030*



**instalight Control LEDTRIX Master**  
*50913000*



**instalight Vario basic device**  
*V2 GR 001*



**instalight Vario interface module LEDTRIX**  
*V2 FM LX 001*



**DMX-LEDTRIX Gateway 2**  
**channel, built-in**  
**51688014**